



OFFERS OVER £450,000

Mansfield Road, Mansfield
Woodhouse, Mansfield,

Welcome to **BuckleyBrown**, where every home is carefully presented, so you can explore with clarity and confidence.

BuckleyBrown
ESTATE AGENTS

"Designed with contemporary living in mind, the property features sleek interiors, quality finishes, and a well-planned layout that provides both comfort and practicality. Ready for you to move straight in."

- Luke, Valuer



TURNKEY PERFECTION IN A PRIME SETTING

From the moment you arrive, this home immediately stands out with its attractive exterior and warm, welcoming presence.

Offering spacious and beautifully maintained accommodation throughout, it has been thoughtfully presented to a high standard along with an extension, making it an ideal choice for those seeking a property that effortlessly combines comfort, practicality, and long-term appeal, while still offering a move-in ready feel with nothing left to do.



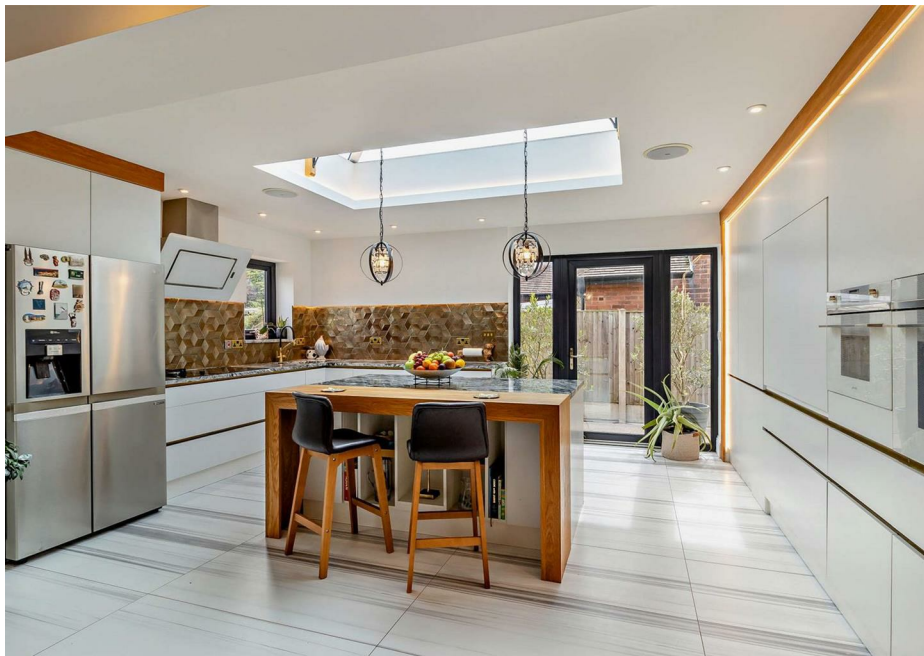
THE FINER DETAILS

This beautifully crafted and thoughtfully extended home is introduced by a sleek and welcoming entrance hallway, immediately setting the tone for the exceptional standard of accommodation found throughout. Lovingly improved by the current owners, the property has been finished to an impeccable specification, seamlessly combining style, comfort, and practicality.

At the heart of the home is a stunning open-plan L-shaped contemporary kitchen, designed with both everyday living and entertaining in mind. Featuring a central island, luxurious granite worktops, a skylight that floods the space with natural light, and an impressive range of Smeg appliances, this exceptional kitchen enjoys direct access to the rear garden via elegant doors, creating a wonderfully bright and airy atmosphere. The kitchen is further enhanced by a highly versatile utility room/walk-in wardrobe space, providing excellent additional storage. Flowing effortlessly from the kitchen is a spectacular open-plan living and dining area, cleverly defined by a striking 16kW multifuel burner fireplace. Expansive bi-folding doors open fully onto the garden, creating a seamless connection between indoor and outdoor living and offering the perfect setting for both family life and entertaining guests.

The property boasts three generously proportioned double bedrooms, all beautifully presented and finished to a high standard. The superb principal bedroom benefits from its own stylish en suite shower room, complete with the added luxury of underfloor heating. The remaining bedrooms are served by a sleek and contemporary family bathroom, providing both comfort and practicality for modern living.

Externally, the property continues to impress. To the front, a secure gated driveway provides ample off-road parking and leads to a detached double garage, offering both convenience and privacy. To the rear, a beautifully landscaped and generously sized garden creates a private oasis, featuring a well-maintained lawn, mature decorative shrubs, a decked seating area, an additional patio, and a charming pergola. Enjoying a secluded position and not being overlooked, this superb outdoor space provides the ideal environment for relaxing, dining al fresco, and entertaining throughout the year.

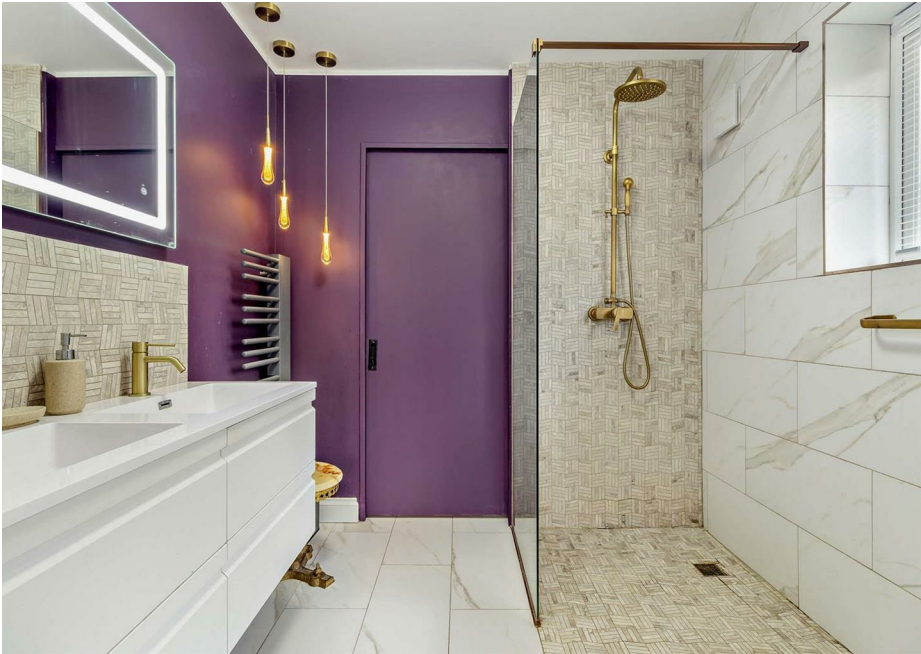




BuckleyBrown
ESTATE AGENTS







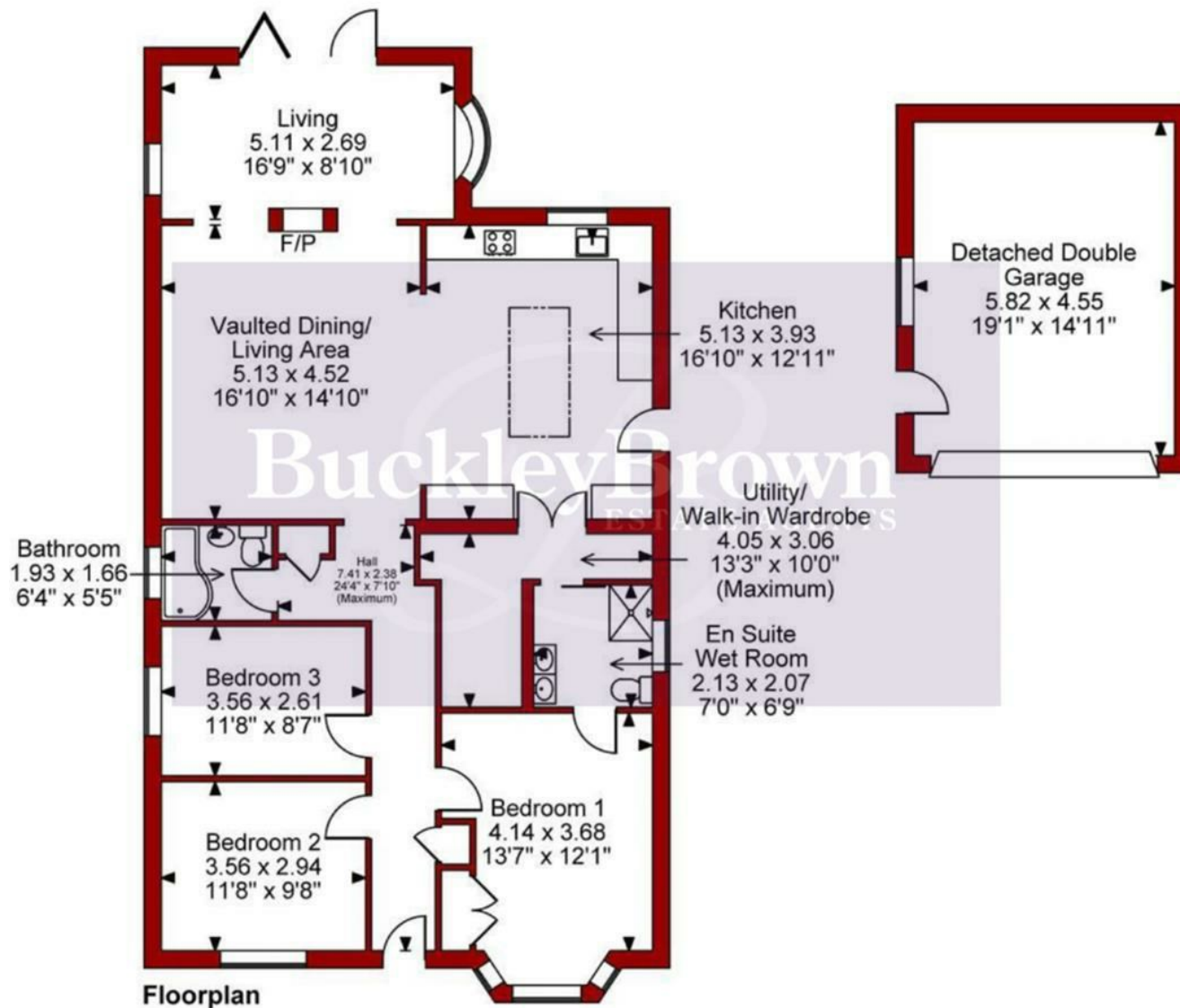
LIFE IN MANSFIELD WOODHOUSE

Mansfield Woodhouse is a popular and well-established suburb located to the north of Mansfield town centre, offering a pleasant residential setting with a strong sense of local character. Combining everyday convenience with access to green spaces, the area appeals to a wide range of buyers seeking a balance between town living and community atmosphere.

The area itself has a proud heritage and a welcoming feel, centred around its historic High Street and traditional market place. Residents benefit from a variety of local amenities, including independent shops, supermarkets, schools and healthcare facilities, along with a selection of cafés, pubs and community services.

Surrounded by attractive countryside and green spaces, Mansfield Woodhouse is well suited to those who enjoy outdoor living. Nearby parks, woodland areas and open countryside provide opportunities for walking, cycling and recreation, while the wider Sherwood Forest area is easily accessible for longer countryside outings.





Buckley Brown
EST. 1988

Key Features

Sleek entrance setting a excellent first impression

Stunning open plan modern kitchen with central island

Feature skylight in the kitchen creating a light filled space to cook

Seamless ground floor living

Feature log burner fireplace dividing reception areas

Bi-folding doors opening onto the rear garden

Master bedroom with en suite

Underfloor heating in the kitchen and en suite

Walk in wardrobe/utility room for additional storage

Council Tax Band C

Energy Performance Certificate (EPC) Rating D

BuckleyBrown
ESTATE AGENTS



These particulars are intended as a guide only and do not form part of any offer or contract. All descriptions, measurements, images and plans are provided for illustration purposes and should not be relied upon as statements of fact. Prospective purchasers should satisfy themselves as to the accuracy of the information. Buckley Brown Estate Agents accept no liability for any loss arising from reliance on these details.

© Buckley Brown Estate Agents 2026. All rights reserved.

Exceptional homes deserve
exceptional representation.

Let's Chat.

01623 633633

mansfield@buckleybrown.co.uk

buckleybrown.co.uk

BuckleyBrown
ESTATE AGENTS